



TAI-SAW TECHNOLOGY CO., LTD.

No. 3, Industrial 2nd Rd., Ping-Chen Industrial District,
Taoyuan, 324, Taiwan, R.O.C.

TEL: 886-3-4690038 FAX: 886-3-4697532

E-mail: tstsales@mail.taisaw.com Web: www.taisaw.com

Approval Sheet For Product Specification

Issued Date: Dec, 31, 2003

Product Name: SAW Filter 1575.42 MHz SMD 3X3 mm

TST Parts No.:TA0316A

Customer Parts No.:_____

Company:_____
Division:_____
Approved by :_____
Date:_____

Checked by:_____ Bob Chau

Approval by:_____ Francis Chen

Date:_____ 12, 31, 2003



TAI-SAW TECHNOLOGY CO., LTD.

No. 3, Industrial 2nd Rd., Ping-Chen Industrial District,
Taoyuan, 324, Taiwan, R.O.C.

TEL: 886-3-4690038 FAX: 886-3-4697532

E-mail: tstsales@mail.taisaw.com Web: www.taisaw.com

SAW Filter 1575.42 MHz for GPS

MODEL NO.: TA0316A

REV. NO.:1

A. MAXIMUM RATING:

1. Input Power Level: 10 dB_m
2. DC voltage: 5 V
3. Operating Temperature: -40°C to +85°C
4. Storage Temperature: -50°C to +100°C

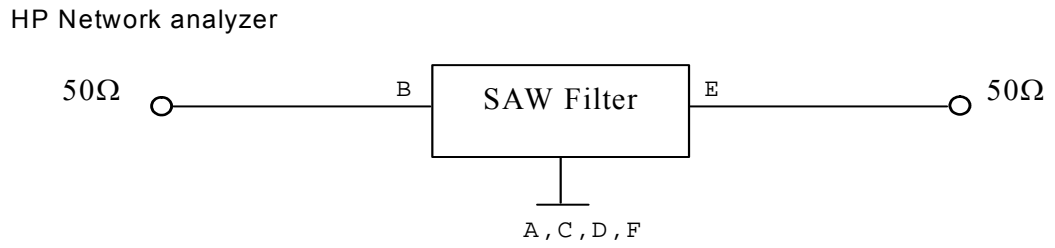
RoHS Compliant
Lead free
Lead-free soldering

B. ELECTRICAL CHARACTERISTICS:

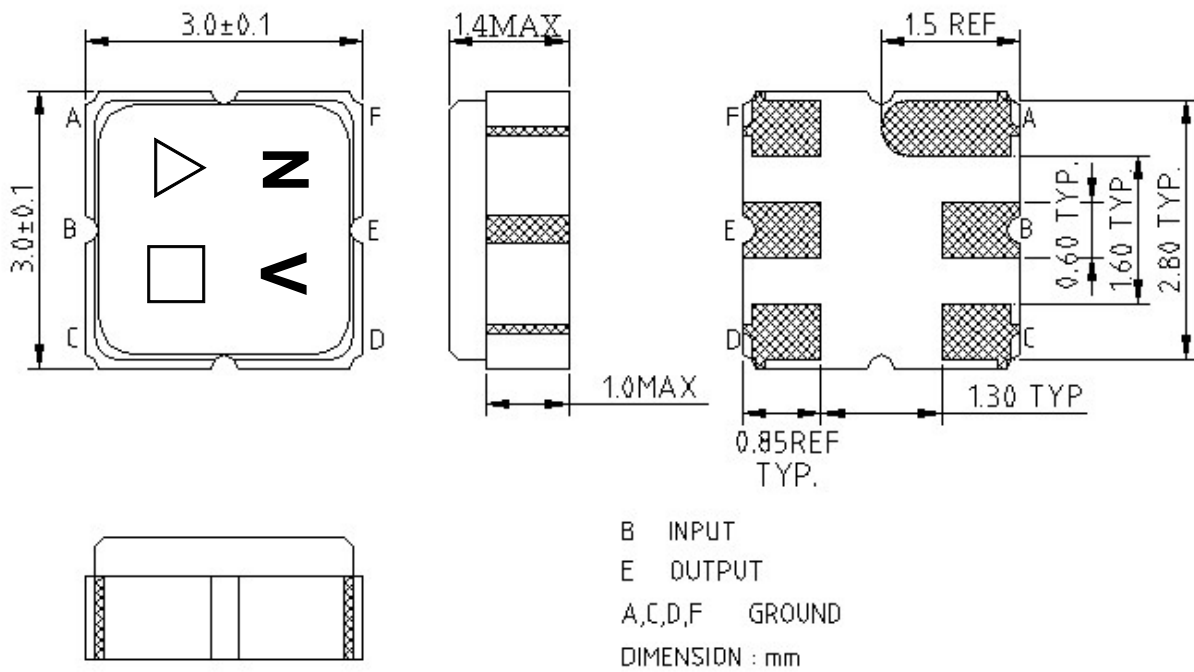
Item		Min.	Typ.	Max.
Center frequency	F_c (dB)	-	1575.42	-
Insertion loss (1574.42~1576.42 MHz)	IL (dB)	-	2.4	3.5
Amplitude ripple (1574.42~1576.42 MHz)	(dB)	-	0.1	1.5
Attenuation (Reference level from 0 dB)				
DC ~ 1000	MHz (dB)	50	60	-
1000 ~ 1475	MHz (dB)	35	45	-
1475.42	MHz (dB)	35	46	-
1535.42	MHz (dB)	25	39	-
1615.42	MHz (dB)	25	32	-
1675.42	MHz (dB)	40	55	-
1700 ~ 3000	MHz (dB)	25	31	-
Input/Output VSWR (1574.42~1576.42 MHz)		-	1.4	2.5
Source impedance	Z _s (Ω)	-	50	-
Load impedance	Z _L (Ω)	-	50	-

Note1. The standard definitions is in JIS C 6703

C. MEASUREMENT CIRCUIT:

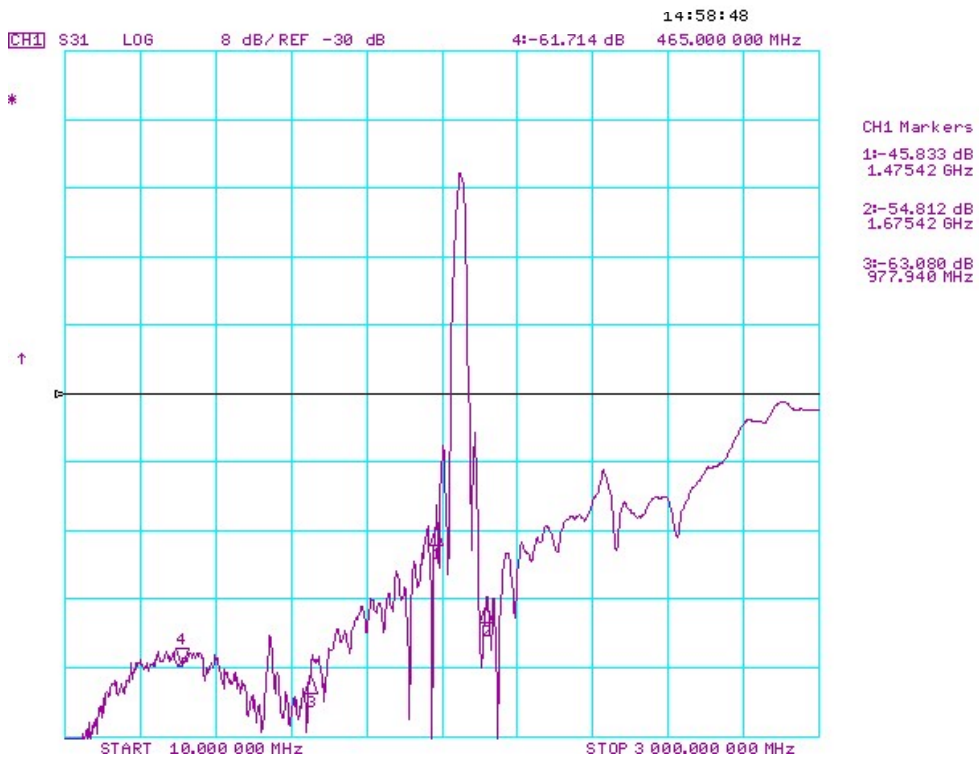
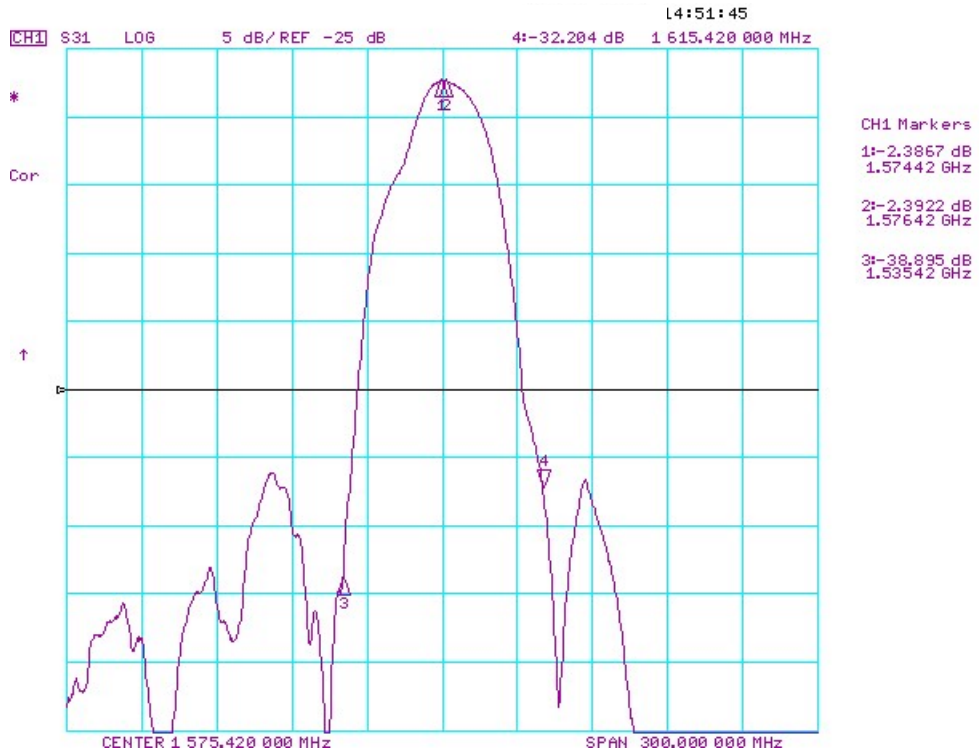


D. OUTLINE DRAWING:



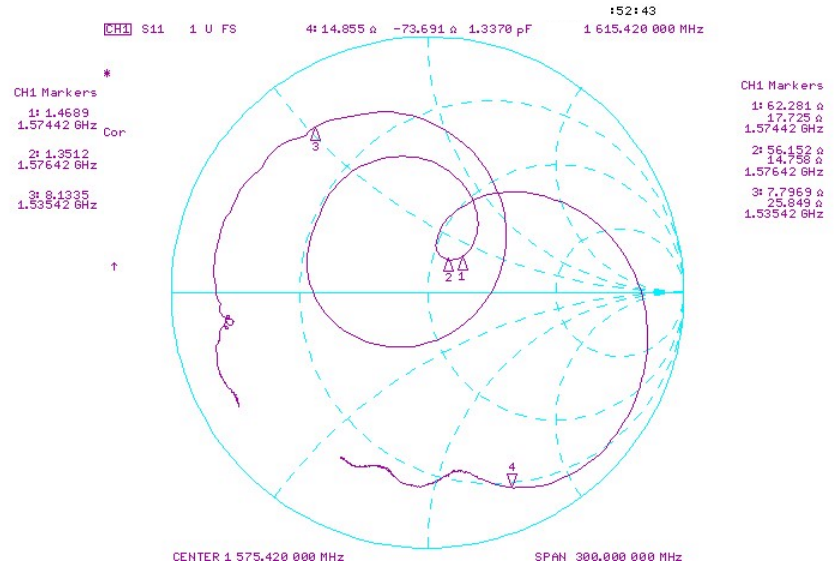
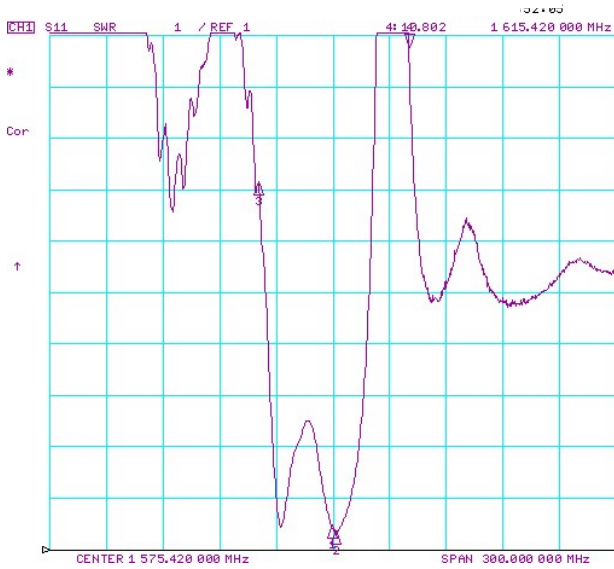
△ : Year Code
 □ : Date Code

E. Frequency Characteristics : Transfer function

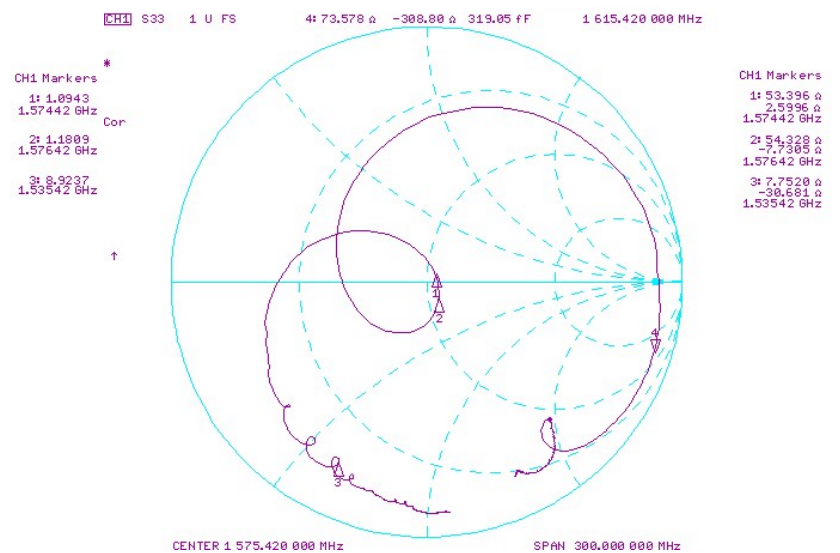
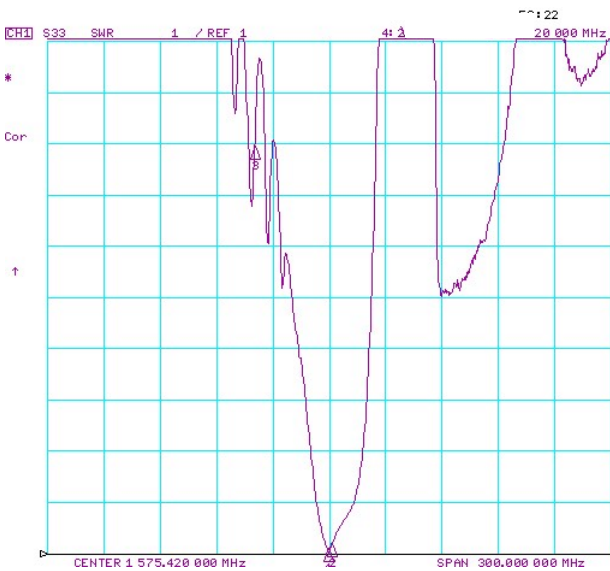


Reflections Functions :

S11

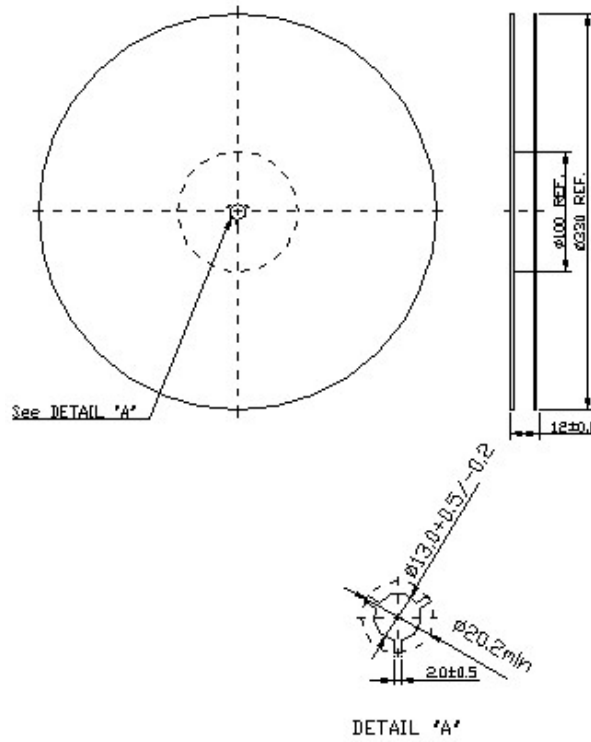


S22



F. PACKING:

1. REEL DIMENSION



2. TAPE DIMENSION

